



# Loewe **klang bar5 mr & klang sub5**

Soundbar and subwoofer set

Active 5.1.2 Dolby Atmos soundbar with wireless subwoofer  
Complete system with 800 watts total music power  
Dolby Atmos, DTS:X and HDMI eARC support  
Expandable to a discrete 5.1.2 home cinema via Loewe wireless digital audiolink  
Multiroom via DTS Play-Fi, Apple AirPlay and Google Cast  
Fits perfect to TV sets 55 inch or bigger



LOEWE. was found by the Loewe brothers as Radio Frequenz GmbH in Berlin in 1923.  
Today we still design, develop and produce consumer electronics – Made in Germany.  
bild – is the German word for picture or image.  
klang – is the German word for sound or tone.

Data sheet

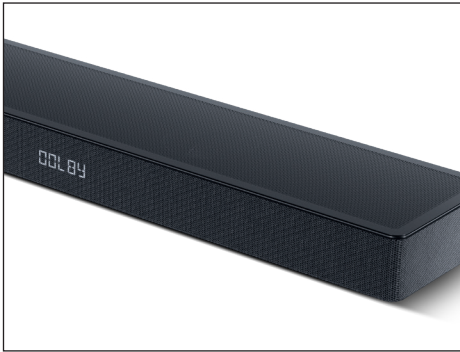
Loewe **klang bar5 mr & klang sub5**  
December 2023

**LOEWE.**

loewe.tv

# Loewe **klang bar5 mr & klang sub5**

Active soundbar and subwoofer set



## **Dolby Atmos soundbar.**

With a total music output of 440 watts crystal-clear, powerful 3D Dolby Atmos sound is guaranteed. Dolby Atmos, Dolby Atmos Music and DTS:X ensure an immersive movie experience.

The result: breathtaking three-dimensional surround sound like in a cinema or concert hall.



## **Multichannel and multiroom.**

Three HDMI connections and 4K pass-through leave nothing to be desired when connecting to UHD players, set-top boxes and game consoles.

The multichannel platform makes expanding the system a breeze, as additional klang mr speakers can be added to the existing setup in seconds.



## **Versatile streaming options.**

Apple AirPlay, Google Cast and Bluetooth provide a variety of services such as Spotify, Amazon Music, Tidal, Deezer and Internet radio. Stream your favourite content at the touch of a button.



## **The subwoofer: invisible power.**

The round and pleasing 360° design allows to place the wireless subwoofer almost anywhere. Its powerful and controlled low-frequency sound spreads evenly and non-localisable throughout the room – without disturbing the neighbours with structure-borne noise: Thanks to the clever design with a precisely balanced, mirrored construction in hexagonal arrangement, it always remains outwardly vibration-free at peace in itself.



## **Elegance and perfection in every detail.**


A lacquered stainless steel plate covers the top of the subwoofer and simultaneously dampens any interfering stimulus through its sheer mass. The special two-yarn woven and robust acoustic fabric creates a vivid visual plasticity. The power connection and level control are unobtrusive located on the bottom and rear panels. The Loewe system colour basalt grey and the typical Loewe signature flag round off the harmonious 360° design.



## **Bigger inside than outside.**

The active subwoofer delivers a total music output of 360 watts and has in total of more than 1.000 cm<sup>2</sup> of effective membrane surface from 2 active 6-inch drivers and 4 passive radiators. This means it can easily play down to 35 Hertz low frequency and offers an astonishingly impressive bass foundation in the home cinema. The Loewe Wireless Digital Audio Link 2.0 ensures lossless and latency-free signal transmission.

## **Colour**

 basalt grey

## **Model**

klang bar5 mr

## **Article**

60601

# Loewe **klang bar5 mr & klang sub5**

Active soundbar and subwoofer set

## Achievements



reddot winner 2021



**“The klang bar5 mr together with the klang sub5 hits the spot.”**

Audio Video Foto Bild, edition 12/2022 about klang bar5 mr  
test score 1,4 VERY GOOD

**“The Loewe klang bar5 mr with the sub5 is (...) a real pleasure to listen to.”**

HiFi Test, edition 5/2022 about klang bar5 mr  
test score Reference Class, 1+, HIGHLIGHT

# Loewe klang bar5 mr & klang sub5

Active soundbar and subwoofer set

## Setup solutions

### Loewe floor stand flex

Floor stand for bild v, bild i, bild c and We. SEE in combination with klang bar5 mr and klang bar3 mr  
W x H x D = 54,0 x 73,5 x 54,0 cm  
Weight = 23,5 kg

manually rotatable (+/-45°), concealed cable guide, with equipment board for accessories and adapter for sound bar

#### Colour

 basalt grey



#### Model

floor stand flex

#### Article

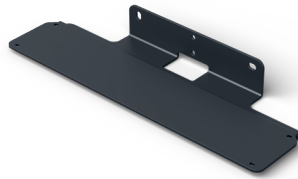
60800

### Loewe wall mount klang bar

Wall mount for mounting the Loewe klang bar5 mr or Loewe klang bar3 mr

W x H x D = 40 x 5 x 13,2 cm  
Weight = 1,2 kg

 black



wall mount klang bar

60810

### Loewe spacer table stand v

Spacer between TV and table stand

W x H x D = 5,2 x 5,7 x 5,2 cm  
Weight = 0,8 kg

 black




spacer table stand v

60811

### Loewe spacer table stand i

Spacer between TV and table stand

W x H x D = 5,3 x 6,3 x 5,3 cm  
Weight = 0,2 kg

 basalt grey



spacer table stand i

60812

## System components

### Loewe klang mr5

Wireless active speakers with 180 watts for multichannel home cinema or multiroom audio

 basalt grey




klang mr5

60606

### Loewe klang mr3

Wireless active speakers with 150 watts for multichannel home cinema or multiroom audio

 basalt grey




klang mr3

60605

### Loewe klang mr1

Wireless active speakers with 30 watts as rear surround or for multiroom audio

 basalt grey



klang mr1

60604

### Loewe klang sub5

Any number of klang sub5 can be connected to a klang bar3 mr or klang bar5 mr at the same time

 basalt grey



klang sub5

60603

Data sheet

Loewe **klang bar5 mr & klang sub5**

December 2023

# Loewe klang bar5 mr & klang sub5

Active soundbar and subwoofer set



All product and company names are trademarks™ or registered® trademarks of their respective holders. Use of them does not imply any affiliation with or endorsement by them. Google and Chromecast built-in are trademarks of Google LLC.

## Technical data

Loewe klang	bar5 mr
<b>Audio (acoustic)</b>	
Frequency range (Hz) @ ffl3 dB	60-20.000
Orientation front / side / up / rear firing	● / ● / ● / —
Acoustic speaker concept	closed bar + klang sub5
Channel configuration (speaker layout)	5.1.2 (surround)
Driver total amount	11
Driver active	4x 48 x 90 mm, 3x 0.75", 2x 44 x 74 mm, 2x 3"
2-channel crossover	● active
<b>Audio (electric)</b>	
Frequency range (Hz) @ ffl1 dB	100-20.000 + 10-200
Class-D amp	●
Power (watts sine / music)	220 / 440
Total harmonic distortion @ 1 watt /10 watts	< 0,5
Dynamic range / Signal to noise ratio (dB)	24 bit / > 75
Bass and treble control / loudness	● (remote) / dynamic
Balance / gain adjustment (dB)	— / ● (+/-6 dB)
Protection circuit: heat / current / voltage / short cut	● / ● / ● / ●
Dolby Audio / Digital / Digital Plus / Volume / Atmos / Atmos Music	● / ● / ● / ● / ● / ●
DTS HD / DTS:X	● / ●
<b>Operation and apps</b>	
Display technology	White D-LED
Screen resolution (pixels)	5 x 16 segments
Screen diagonal (cm / inch)	6 / 2,4
my Loewe app / smart apps (all: Android + iOS)	● (DTS Play-Fi)
Voice control by Alexa skills	●
Software update (via USB / Internet)	● / ● (DTS Play-Fi)
<b>Media and reception</b>	
USB music player	●
Bluetooth music player	●
Internet radio	● (via DTS Play-Fi app)
DTS Play-Fi / Hi-Res Audio	● / ●
Spotify Connect / Google Cast / Apple AirPlay	● / ● / ●
Multiroom audio support	●
Multichannel home cinema support	●
<b>Connectivity and interfaces</b>	
HDMI	2 x HDMI 2.0b (incl. 4K pass-through)
HDCP 2.2 / HDMI-CEC / ARC / eARC	● / ● / ● / ●
USB	1 x USB 2.0
Bluetooth	●
WLAN (Wi-Fi) integrated	●
Wireless Digital Audiolink (second generation)	●
Optical TOSLINK	●
Analogue audio jack in (3.5 mm stereo)	●
Wall mount	○
<b>Network and formats</b>	
WLAN (Wi-Fi) standard	IEEE 802.11a/b/g/n/ac
WLAN (Wi-Fi) power (max. mW)	<100
WLAN (Wi-Fi) frequency range	2400-2483,5 / 5150-5725 MHz
WLAN (Wi-Fi) encryption	WEP 64, 128 Bit (ASCII, HEX)
WLAN (Wi-Fi) encryption WPA	WPA PSK, WPA2 AES, WPS
Bluetooth standard	4.2
Bluetooth power (max. mW)	<10
Bluetooth frequency range	2,4 GHz
Bluetooth protocols	A2DP SNK, AVRCP
Supported audio formats	MP3, AAC, AAC+, M4A, WAV, FLAC, PCM, Dolby True HD, Dolby Audio, Dolby Digital, Dolby, Digital Plus, Dolby Atmos, Dolby Atmos Music, DTS, DTS HD, DTS Virtual X, DTS Play-Fi, Hi-Res AUDIO 4K Video Pass-Through, Dolby Vision, DR10, HDR10+
Supported video formats	
<b>Energy and environment</b>	
Mains voltages AC	100-240V, 50/60 Hz
Power consumption eco standby mode (watts)	0,5
Power consumption multiroom sleep mode (watts)	6
Ambient temperature while in operation	5-35° C
Relative humidity (non-condensing)	20-80%
<b>Dimensions</b>	
Weight (approx. kg)	6,5 + 8,8
W* x H x D (approx. cm)	120,0 x 7,1 x 16,0
<b>Scope of Delivery</b>	
Remote control (incl. batteries)	Loewe remote klang mr (2x CR2032)
Manual / power cord	● / ●
Others	klang sub5, HDMI cable
<b>Optional accessories</b>	
Selection of recommended setup solutions and audio systems	bild i, floor stand flex, spacer table stand v, spacer table stand i, wall mount klang bar klang mr5, klang mr3, klang mr1, klang sub5

## Technical data

Loewe klang	sub5
<b>Audio (acoustic)</b>	
Frequency range (Hz) @ ffl3 dB	35-150
Orientation front / side / up / rear firing	radial (motion compensation)
Acoustic speaker concept	closed + passive membranes
Channel configuration (speaker layout)	0.1 (subwoofer)
Driver total amount	6
Driver active	2x 6"
Driver passive	4x 6"
2-channel crossover	● low pass
<b>Audio (electric)</b>	
Frequency range (Hz) @ ffl1 dB	10-200
Class-D amp	●
Power (watts sine / music)	180 / 360
Total harmonic distortion @ 1 watt /10 watts	< 1
Dynamic range / Signal to noise ratio (dB)	16 bit / > 60
Bass and treble control / loudness	● (gain adjustment) / —
Balance / gain adjustment (dB)	— / ● (via volume knob)
Protection circuit: heat / current / voltage / short cut	● / ● / ● / ●
<b>Media and reception</b>	
Multiroom audio support	● (via klang bar mr)
Multichannel home cinema support	●
<b>Connectivity and interfaces</b>	
Bluetooth	—
Wireless Digital Audiolink (second generation)	●
Analogue audio jack in (3.5 mm stereo)	●
<b>Network and formats</b>	
WLAN (Wi-Fi) standard	—
WLAN (Wi-Fi) power (max. mW)	<100
WLAN (Wi-Fi) frequency range	5725-5850 MHz
WLAN (Wi-Fi) encryption	—
WLAN (Wi-Fi) encryption WPA	—
<b>Energy and environment</b>	
Mains voltages AC	100-240V, 50/60 Hz
Power consumption eco standby mode (watts)	0,5
Power consumption network standby mode (watts)	0,5
Ambient temperature while in operation	5-35° C
Relative humidity (non-condensing)	20-80%
<b>Dimensions</b>	
Weight (approx. kg)	8,8
W* x H x D (approx. cm)	38,0 x 21,4 x 38,0
<b>Scope of Delivery</b>	
Manual / power cord	● / ●
Others	—
<b>Optional accessories</b>	
Selection of recommended setup solutions and audio systems	klang bar5 mr, klang bar3 mr iconic v, iconic i

● = available, ○ = optional, — = not available

Technical changes and delivery options are subject to change without notice. The product portfolio may be different and might vary depending on the country. Service matters are all handled individually.

Data sheet

Loewe klang bar5 mr & klang sub5

December 2023